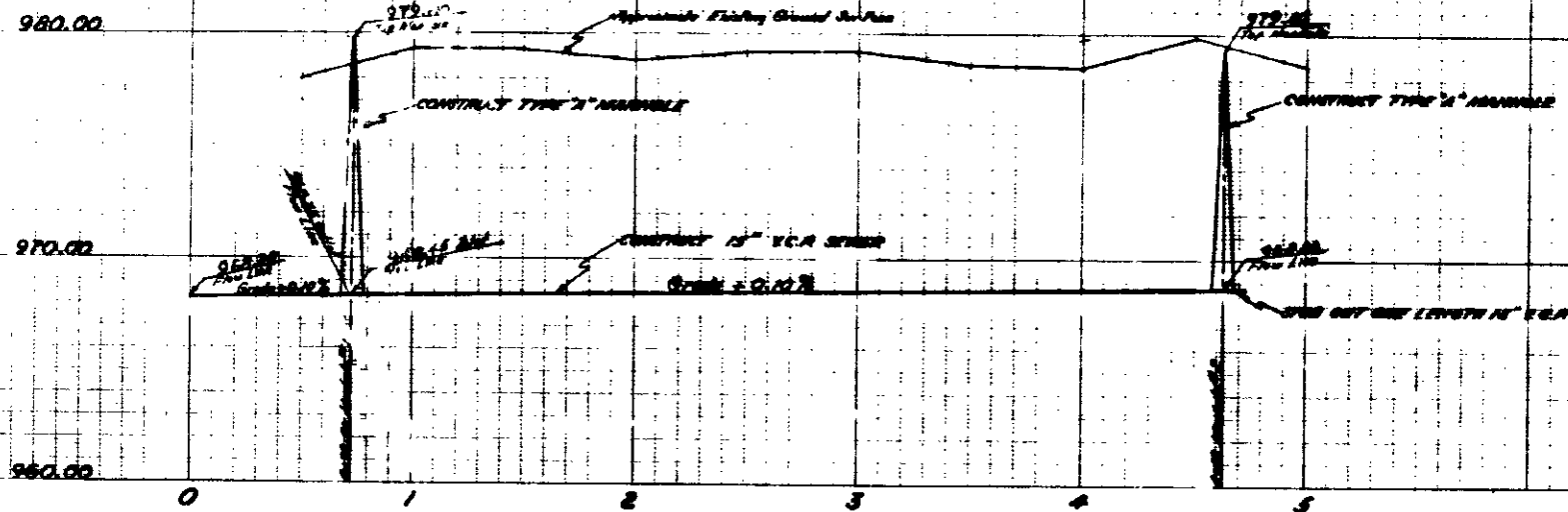


**PROFILE**  
 Horiz. 1" = 50'  
 Vert. 1" = 6'



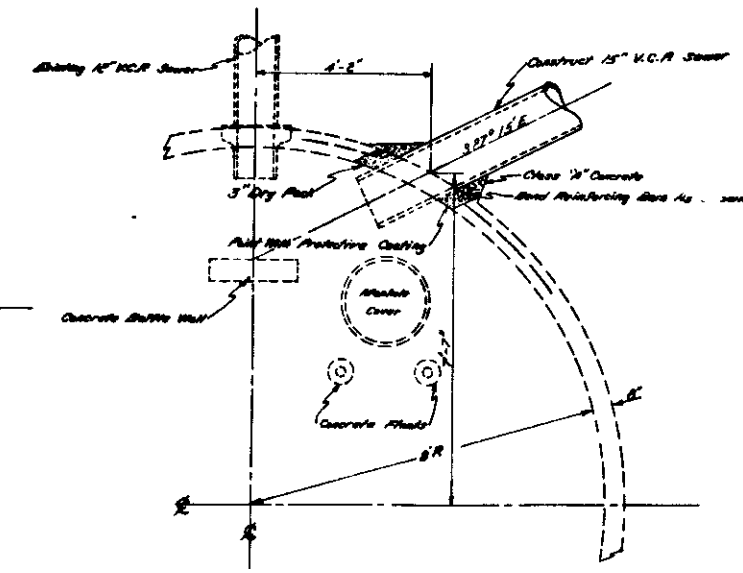
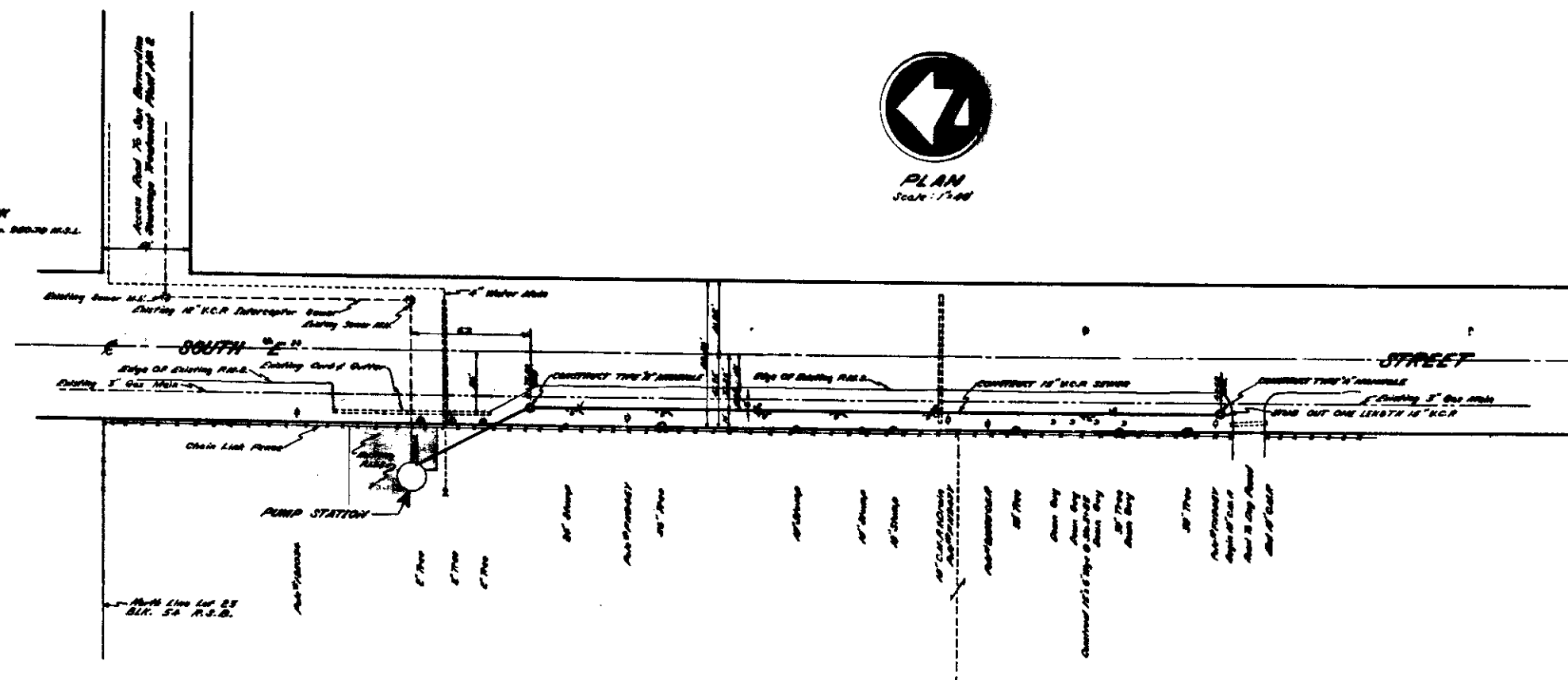
**GENERAL NOTES**

1. All work indicated on this plan shall be done in conformity with applicable provisions of Standard Specifications No. 229 of Standard Drawings No. 232 or file in the Office of the City Engineer.
2. Locations of underground utilities as shown on these plans are not to be assumed as either exact or complete and the City assumes no responsibility for errors or omissions in showing such locations. The contractor should verify or ascertain the location of all underground utilities and he must assume all liability for damages caused by his operations.
3. 15" x 6" Pipes to be constructed shown on plan this 15"
4. 18" x 6" Pipes to be constructed shown on plan this 18"
5. Complete Profiles - One Foot Out of Alignment NB 50 primer and two coats of Bitumastic NB 50 Frame/ as manufactured by the Rogers Company. First coat of enamel is to be mixed with U.O.C. 75 per gallon of aluminum paint.
6. Sewer Manholes shall be constructed of either "Block Lock", "Spool-Seat" or "Band-Seat" Vitrified Clay Pipe.
7. Manhole Steps shall not be required. Manhole Frames and Covers shall be Alameda Foundry NB A-1190 (Steel Knight) or approved equal.
8. Existing Curb and Pavement removal at Manhole Stations 1/5 shall be restored with material of equal or better quality to same thickness as existing.



**PLAN**  
 Scale: 1" = 40'

**BENCH MARK**  
 Spot in Pub. # 125034 Sta. 880.00 M.S.L.



**PUMP STATION DETAIL**  
 Scale: 1" = 2'

APPROVED <u>October 21, 1964</u>		DEPARTMENT OF ENGINEERING	
<u>Donald E. Wilford</u>		CITY OF SAN BERNARDINO	
CITY ENGINEER		REGISTERED CIVIL ENGINEER NO. 2222	
DRAWING NO. 2894	DRAWN BY <u>Merrill</u>	INTERCEPTOR SEWER ON SOUTH "E" STREET	
SHEET 1 OF 1	CHECKED BY <u>Dean</u>	BETWEEN PUMP STATION & A POINT 500' SOUTH	
	RECOMMENDED <u>R.C.A. Inc.</u>		